



LOG AND LUMBER HANDLING SYSTEMS

WHOLE LOG METAL DETECTOR CONVEYOR



24" WIDE BELT FOR 48" MAXIMUM DIAMETER LOGS SHOWN

FEATURES

- The Mellott Whole Log Metal Detecting Belt Conveyor is designed to convey logs lengthwise through a metal detecting coil.
- They can be manufactured to use with many brands of metal detecting coils.
- The 3/8" formed plate trough has sloped sides. The sloped sides keep the log centered, helping to prevent jams when transitioning to the downstream conveyor.
- The sides are extended up vertically above the sloped sides to help prevent the coil from being damaged by crooked logs.
- Drive options include a c-face electric motor with speed reducer or a hydraulic motor. Both drives use a 140 roller chain to connect to the drive shaft.
- A separate sub-frame is supplied for most metal detecting coils.
- Metal detector belt conveyors for cants and timbers are also available.

MELLOTT MFG. CO., INC.

13156 Long Lane
Mercersburg, PA 17236
Phone: (717) 369-3125 Fax: (717) 369-2800

www.mellottmfg.com

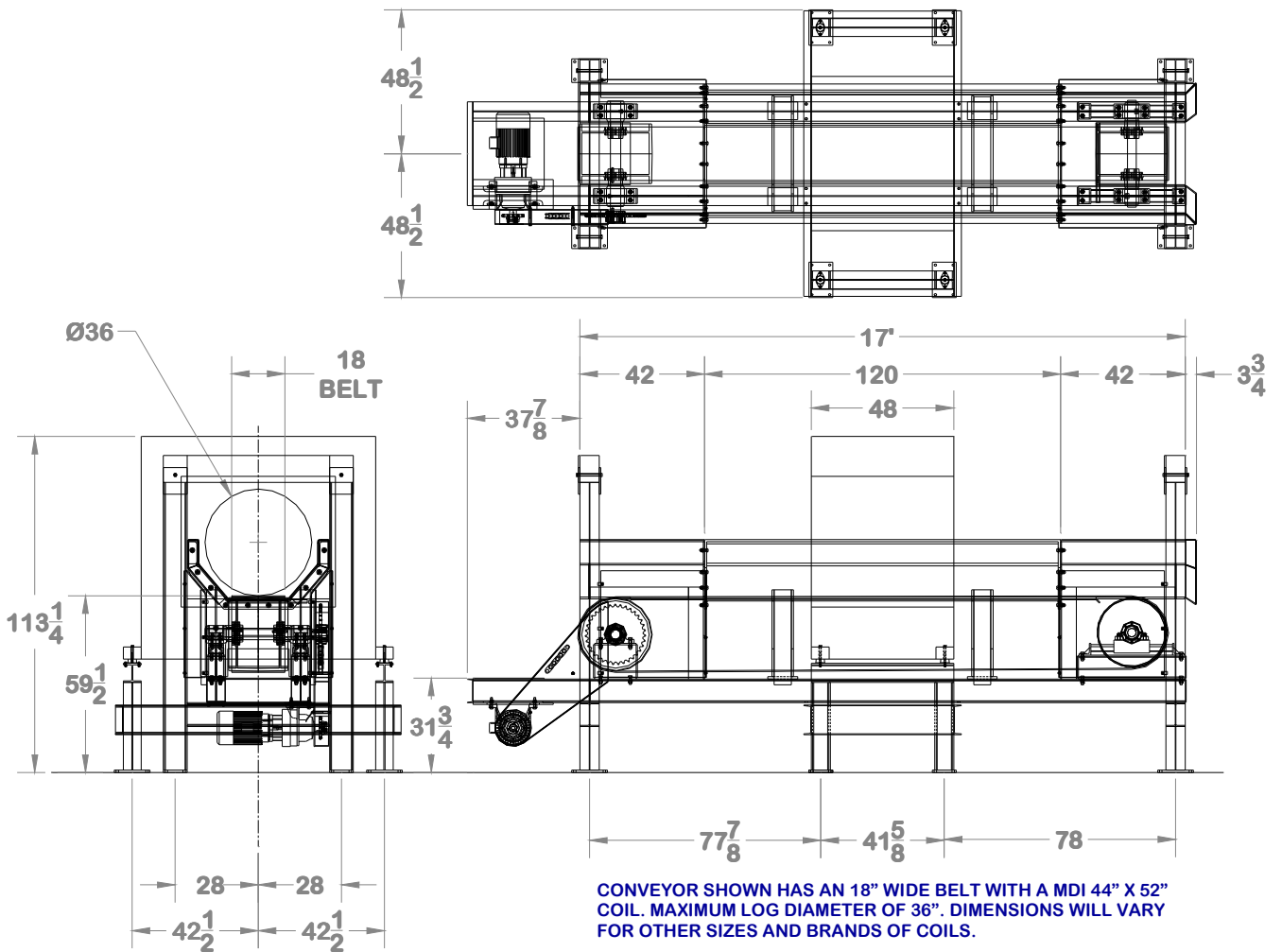


LOG AND LUMBER HANDLING SYSTEMS

WHOLE LOG METAL DETECTOR CONVEYOR

SPECIFICATIONS

Frame	W8 x 24 Beam
Trough	Formed 3/8" Plate
Drive Pulley	24" Diameter Heavy Wall, Lagged
Tail Pulley	24" Diameter Heavy Wall
Drive Shaft	3 7/16" Diameter
Tail Shaft	2 15/16" Diameter
Bearings	Anson Urethane Lined Sleeve Bearings
Belt	Goodyear Pylon Plus, 3 Ply 375, 18", 24" or 30" Wide (depends on coil size)
Hydraulic Drive.....	60 Cu. In. Motor with 140 Roller Chain
Electric Drive	Sumitomo Cyclo Speed Reducer (size 4165) With 10 Hp Motor
Speed.....	115 FPM
Wear Plate	Uhmw Wear Strip Under The Belt



MELLOTT MFG. CO., INC.

13156 Long Lane
 Mercersburg, PA 17236
 Phone: (717) 369-3125 Fax: (717) 369-2800

www.mellottmfg.com