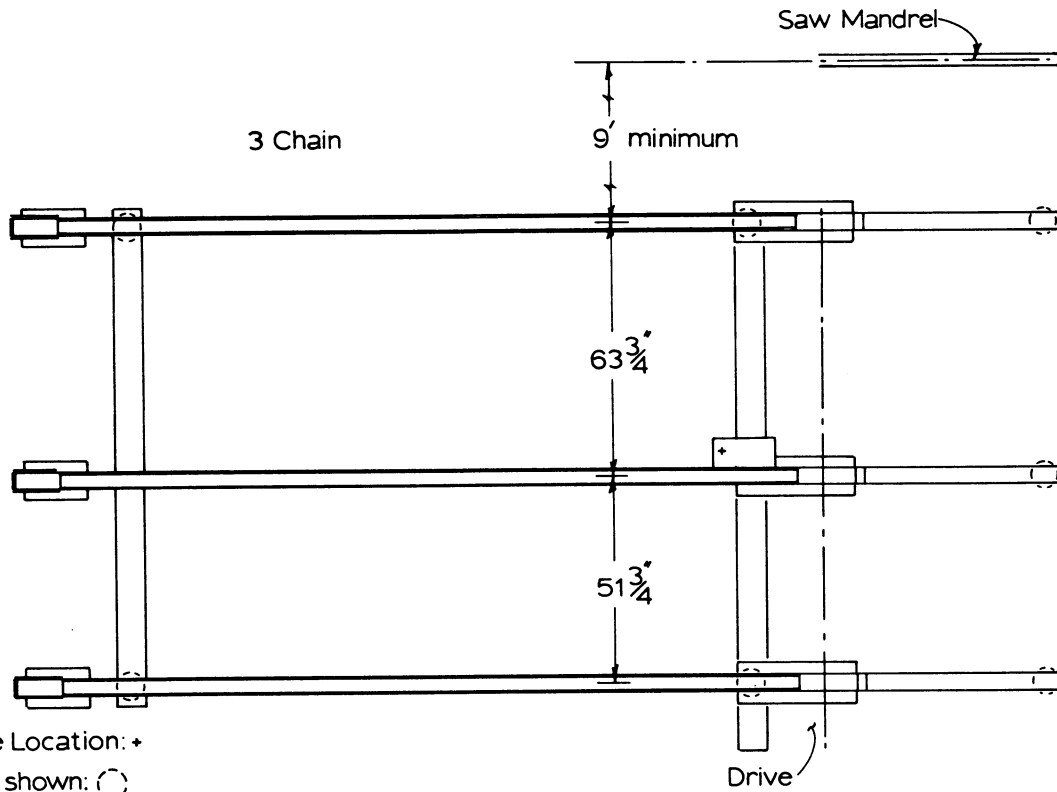
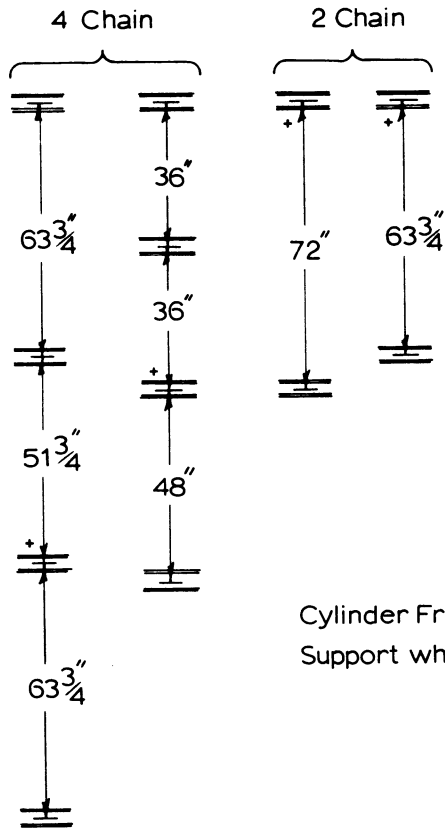
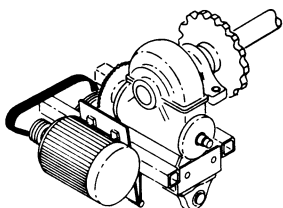
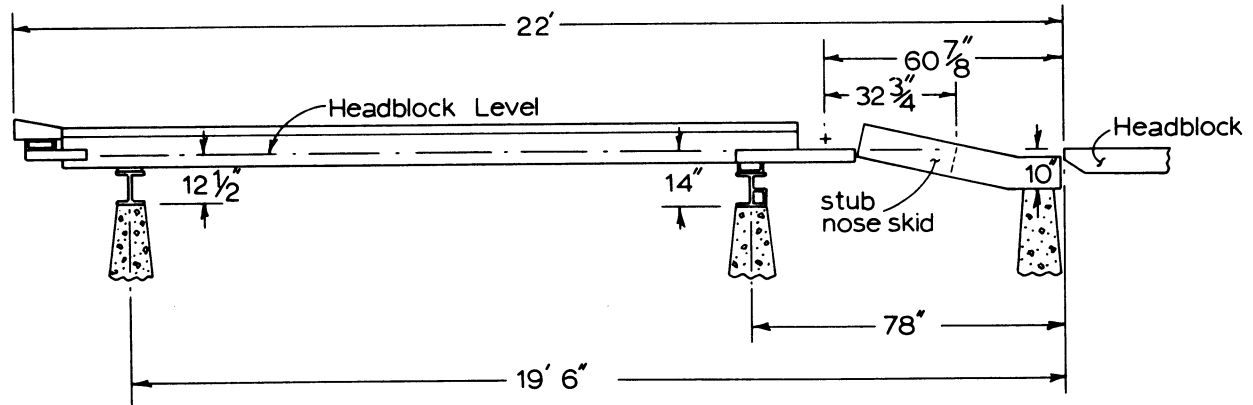


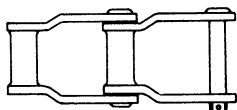
Live Deck Spacings



Cylinder Frame Location: +  
Support where shown: ○



Electric Drive Installation



Chain Installation Direction of travel →

Right Hand Decks Shown

MELLOTT MFG. CO. INC.

SCALE: 1/4" = 1'-0" APPROVED BY: \_\_\_\_\_ DRAWN BY JLP

DATE 4/24/81

Live Deck Installation

DRAWING NUMBER

## LOG DECK INSTALLATION INSTRUCTIONS

### FOUNDATION

Foundation supports should be installed for deck. (See Diagram for dimensions.) If log deck is longer or shorter than standard, measure the distance between the sill mounting plates and install foundation supports for each sill.

### SILLS

Locate the sill for the drive end of the deck. This sill is 12" longer than the other sill or sills. Place this sill on the foundation supports with the end with angle toward the front. Place shorter sill on foundation at tail end of deck. If the deck is longer than standard, other sills must be placed between head and tail sills. If the deck is spliced (i.e. more than one piece per each skid) use the sill with the four bolt holes for each skid at the splice position.

### SKIDS

Skids may now be placed on the sills. Note the position of the skid with cylinder frame. Other skids are interchangeable. Bolt skids to sills with 5/8" x 2-1/2" bolts, nuts, and lock washers.

### SHAFT

Hydraulic motor drive: Position shaft with the drive in correct location (see diagram) on the bearing support at the drive end of the deck. The speed reducer frame tubes on the drive will fit into the sill with angle attached (see diagram). Bolt bearings to skids with 5/8" x 5 bolts, lock washers and nuts, SAE flat washers and jam nuts.

Electric motor drive: Position shaft with the drive in correct location (see diagram) on the bearing supports at the drive end of the deck. Do not bolt at this time. Mount 10.6: sheave and bushing to shaft under the speed reducer. Mount 3.35" sheave and bushing to electric motor. Place 3/3V 530 band belt over tube of speed reducer frame and slide shaft into position with speed reducer frame tubes in sill at angle location. Bolt bearing to skids with 5/8" x 5" bolts, lock washers and nuts, SAE flat washers and jam nuts. Mount motor to motor plate. Place belt on sheaves and adjust belt tension with bolts through motor plate. Install shield.

### CHAIN

Cut chain as necessary to make equal strands for each skid. Install chain so that return is through the skid. (Note chain diagram for direction of travel). Adjust tail sprockets for correct tension after chain is installed.

### NOSE SKIDS

Install nose skids at drive end of deck with 5/8" x 11-1/2" bolts, nuts and jam nuts.

### CYLINDER

Install air or hydraulic cylinder with base clevis fastened to the cylinder frame lug on skid. Fasten rod end cylinder clevis to stop and loader lug.

### SPEED REDUCER

Fill speed reducer to oil level plug with SAE 90-140 gear oil before operation of deck.

### HYDRAULIC AND ELECTRICAL CONNECTIONS

Make hydraulic connections. (See Hydraulic Circuit Diagram).

CAUTION: Keep all hose and valve openings covered until connections are made.

For electric motor driven decks - starters are not provided by Mellott Manufacturing Company, Inc. Local electricians should make proper connections.

### OPERATION

CAUTION: Live decks are moving machinery. Personnel should remain clear of live decks at all times. Never permit personnel to stand between the stop and loader and the carriage. Power to deck must be locked out before any maintenance is performed on the deck.

### HYDRAULIC DRIVE/HYDRAULIC STOP & LOADER:

Start hydraulic power source (either by starting saw mandrel or by starting electric motor connected to pump).

Control of deck drive and stop and loader is by a hand operated or foot operated valve. Move logs forward on the live deck by engaging the spool of the valve connected to the hydraulic motor. Depress the foot pedal or push the hand control lever to accomplish this function. When the logs contact the stop and loader, release the foot pedal or the hand control lever. This will stop the forward movement of the deck chains. Deck chains can be reversed by shifting the valve spool in the opposite direction.

Operation of the stop and loader is controlled by the valve spool connected to the hydraulic cylinder. Depress the foot pedal or push the hand control lever to rotate the stop and loader so that a log will be cradled in the arms. By moving the pedal or lever in the opposite direction, the stop and loader will rotate forward, carrying the log over the sprockets and onto the nose skids.

Operation of the log turner, if one is used, can now help push the log from the nose skids onto the carriage.

### MAINTENANCE

Gear box - check oil level regularly.  
Stop and loader - grease daily depending on use.  
Take-up sprockets at infeed end - lubricate weekly.  
Bearings on headshaft - lubricate twice yearly.

Deck Chain - wears longer and runs easier if chain guides are kept oiled.

Chain tension - adjust take-up to remove slack, do not overtighten.