

Fig. 1

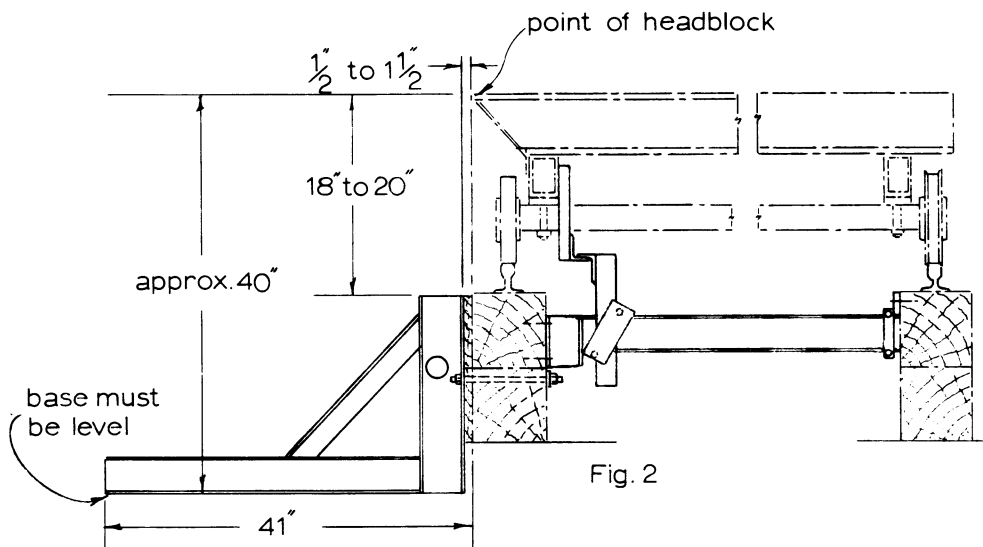


Fig. 2

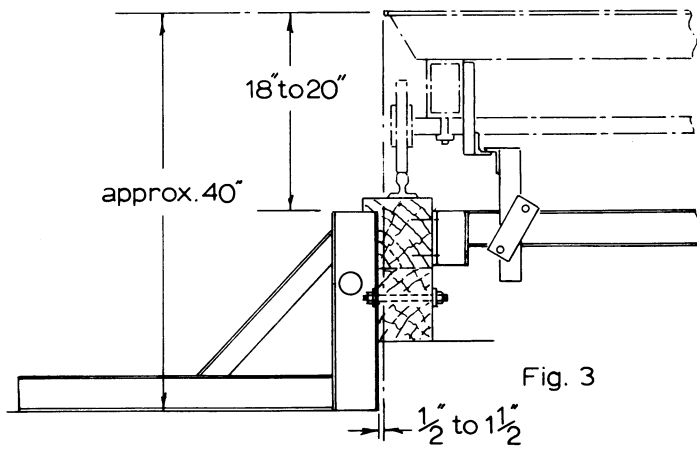
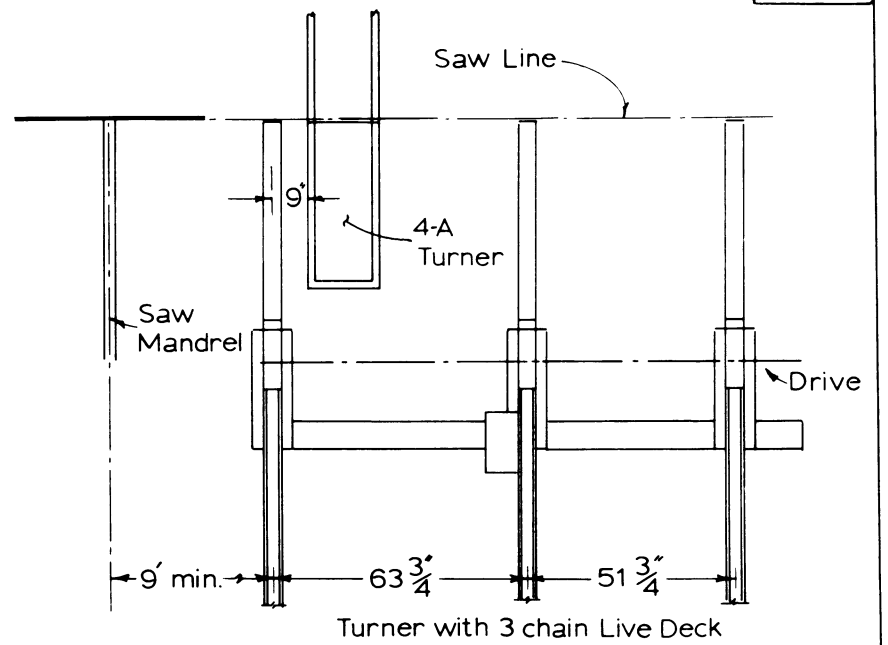
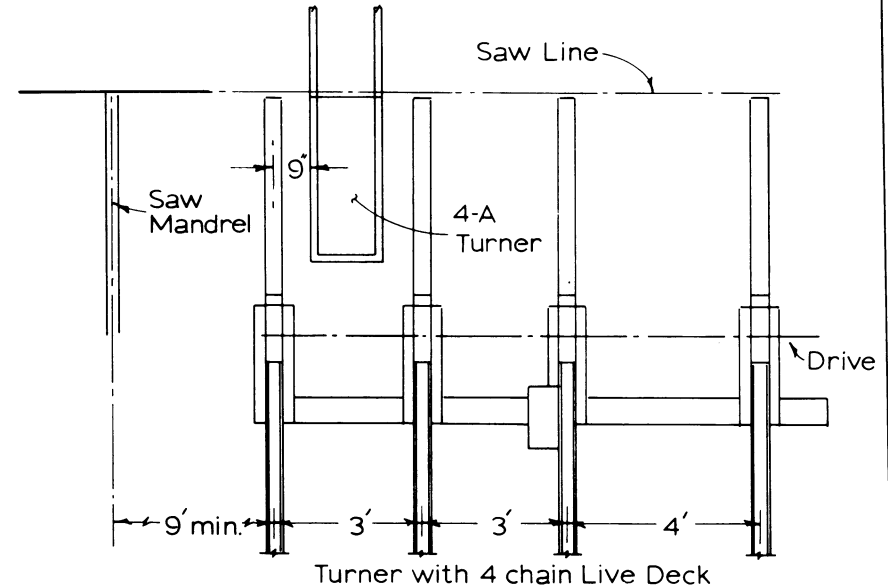


Fig. 3



Turner with 3 chain Live Deck



Turner with 4 chain Live Deck

Note: pit for Turner to be 20' wide.

MELLOTT MFG. CO. INC.		
SCALE <i>NTS</i>	APPROVED BY	DRAWN BY <i>JLP</i>
DATE <i>5/12/82</i>		
Model 4A Log Turner		
Installation		DRAWING NUMBER

## LOG TURNER (MODEL 4A) INSTALLATION INSTRUCTIONS

### INSTALLATION

Make pit for turner per dimensions shown on drawings. Base of pit must be level and may be constructed of concrete. Turner base should rest either on concrete or timbers.

Use dimensions shown on Figure 1, 2, and 3 to position the log turner correctly in relation to the headblocks. The turner base may be lagged to the pit floor or may be secured to the timbers supporting the carriage track with bolts.

Depending on the type of carriage and supports for the track, the installation of the turner frame extensions and anti-derail attachments should be installed following Figure 1, 2, or 3.

Anti-derail attachments may not be necessary if the carriage is equipped with its own anti-derail.

### HYDRAULIC CONNECTIONS

Mount the valve to the "L" bracket using 3 bolts. Mount foot pedal to valve using link and pin. Cut a hole in sawyer's platform and mount valve assembly below surface of platform in such a manner that foot pedal is above platform surface and can be operated by sawyer. Make hydraulic connections following hydraulic circuit diagram.

**CAUTION: KEEP ALL HOSE AND VALVE OPENINGS COVERED UNTIL CONNECTIONS ARE MADE. ALLOW NO DIRT NOR FOREIGN MATERIAL TO ENTER VALVE OR HOSES.**

Route hoses under platform so that they will not become damaged during operation.

During operation, if turner lowers too fast install restrictor #29 (supplied) between cylinder port and 3/4" hose to valve. This will cause turner to lower more slowly.

### OPERATION

**CAUTION: NEVER PERMIT PERSONNEL TO STAND NEXT TO TURNER WHEN IN OPERATION. POWER TO TURNER AND DECK MUST BE LOCKED OUT BEFORE ANY MAINTENANCE IS PERFORMED.**

The Model 4A turner is controlled by a single spool valve mounted on an "L" bracket operated by a foot pedal. Depressing the pedal one direction will raise the turner mechanisms and depressing the pedal in the opposite direction will cause the turner to lower.

Begin operation with the turner in lowered position. Operate stop and loader of live deck to load one log on to the nose skids of the live deck. As log passes over turner, depress the foot pedal to raise the turner. Follow log with turner head and by pushing on log with turner head, load log onto the carriage. During this operation, turner head should ride over top of log and log pusher mechanism will contact log and continue to push log against knees. Log can now be dogged. After dogging, depress foot pedal to allow turner to lower.

To turn log, raise turner until head contacts log and begins to turn log on carriage. Stop turner when desired turn is made. On larger logs, a second turn may be necessary in order to orient log correctly. The turner does not have to be lowered totally in order to make a second turn.

**CAUTION: DO NOT USE TURNER TO "CATCH THE LOG ON THE FLY" OR MOVE THE CARRIDGE WHILE TURNING. THIS PLACES A SIDE LOAD ON TURNER AND CAN DAMAGE TURNER.**

### MAINTENANCE

Keep all debris cleaned out from under turner at end of each shift.

Grease turner pivot points daily.

The breather plug in the rod end of the hydraulic cylinder has a small vent hole. Do not allow this hole to become plugged. Clean vent hole regularly.

Keep #414 prong sharp. Replace prong when it becomes worn from use and repeated sharpening. Replacement of worn parts will insure longer life and optimum operation.

Refer to Hydraulic Trouble Shooting Chart for hydraulic problems.