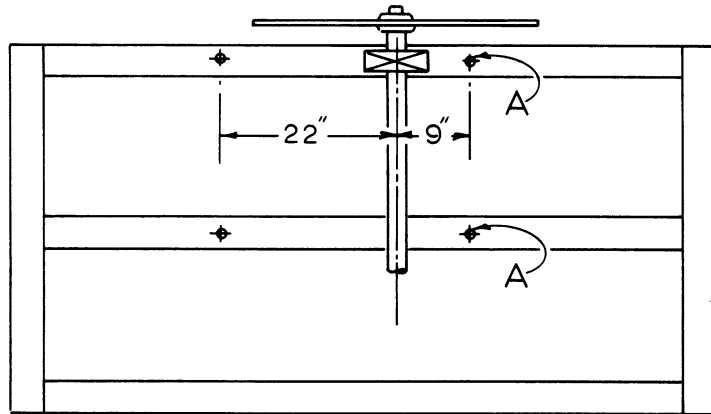
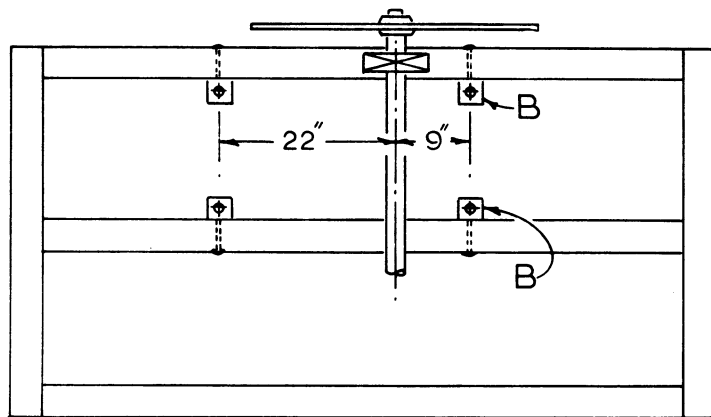


FIG. 1



STEEL HUSK



WOOD HUSK

FIG. 2

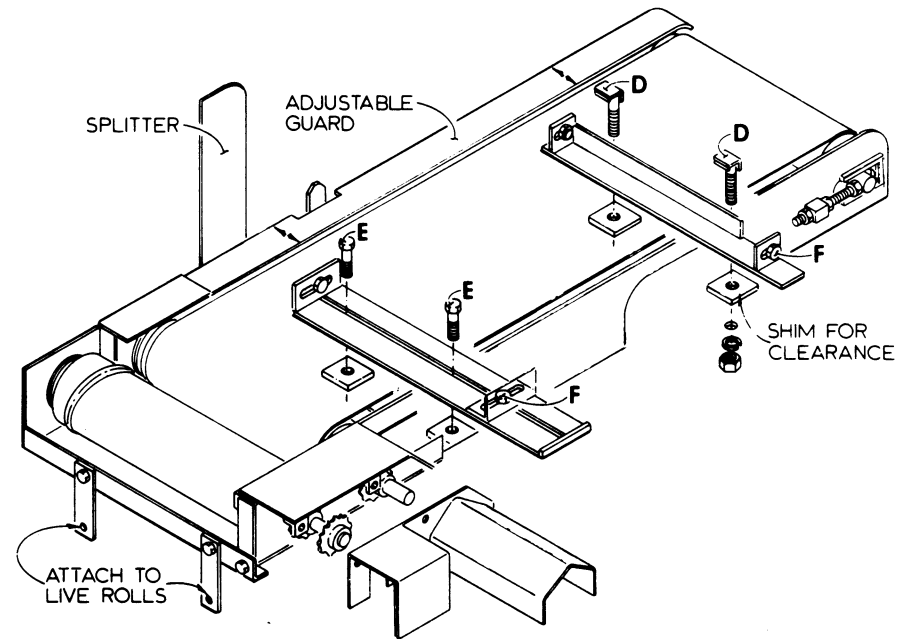
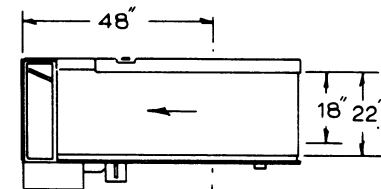


FIG. 3



MANDREL
OFFBEARER PLAN VIEW
SCALE 1/4" = 1'-0"

MELLOTT MFG. CO., INC.		
SCALE <i>NTS</i>	APPROVED BY	DRAWN BY <i>JLP</i>
DATE <i>3/30/88</i>		
Offbearer Items 40A-40B		
Installation		DRAWING NUMBER

OFFBEARER INSTALLATION INSTRUCTIONS

INSTALLATION

1. Determine that the headblocks are at least 2-1/4" higher than the highest point of the mandrel bearing. It may be necessary to shim between axle (etc.) and wheel supports of carriage to obtain the 2-1/4" clearance. Shims are provided for this purpose. (See Figure 1).
2. Top of the mandrel bearing nearest the saw must be smooth. File off burrs or rough places.
3. Drill four(4)17/32" holes (A) before putting offbearer in position. When offbearer is to be installed on wood husks, use the four 2" angles and attach with carriage bolts to the side of the wood members of the husk (B). (See Fig. 2).
4. Loosen the end bolts of Adjustable Guard (center bolt need not be loosened).(See Fig. 3).
5. Set the offbearer in place on the husk and shim with 1/2" shims provided to give approximately 1/8" clearance between the belt beneath the floor of the unit and the mandrel bearing.
6. Install hook bolts (D) over Angle Mount and hex head bolts (E) thru Adjustable Mount Bar and into the holes drilled in the husk. Do not tighten bolts (D & E) or the bolts (F) at this time. (See Figure 3).
7. Place 2 washers between the splitter blade and the frame and bolt the splitter in position. With the saw on the mandrel. align the splitter behind the saw by moving the offbearer. The log side of the saw and the log side of the splitter should be in line. The Adjustable Guard can now be aligned along the saw.
9. Check to be certain the 1/8" clearance remains between belt and mandrel bearing. If this clearance does not remain, shim to regain.
10. The drive can be installed. Drive may be from saw mandrel, electric motor drive or with roller chain to adjacent rolls. Install guards and shields provided for specific drive.

ELECTRICAL CONNECTIONS

For drives powered by electric motors, starters are not provided by Mellott Manufacturing Co., Inc. Local electricians should make proper connections.

SPEED REDUCER

Fill 107SO5 Speed Reducer to oil level plug with 30 Wt. HD motor oil. Oil level should be checked on a regular basis and oil change on an annual basis is recommended.

OPERATION

Offbearer (depending upon drive installed) will operate when electric motor drive is started or when mandrel is turning.

CAUTION: NEVER PERMIT PERSONNEL TO STAND NEAR OFFBEARER WHILE IN OPERATION. NEVER ALLOW PERSONNEL TO REACH OVER OR ONTO OFFBEARER WHILE IN OPERATION.

MAINTENANCE

CAUTION: POWER TO OFFBEARER MUST BE LOCKED OUT AND SAW MANDREL STOPPED BEFORE ANY MAINTENANCE IS PERFORMED.

Keep all debris cleaned out from around offbearer at the end of each shift.

Gearbox - Check oil level regularly.

All Bearings - Lubricate twice yearly.

Belt - Maintain proper belt tension by adjusting take-up bolts. Should belt lacer become damaged or worn, cut off old lacer and install new lacer. Enough belt length is supplied to allow a new lacer to be installed.

Replacement of worn parts will insure longer life and optimum operation.