

**MODEL 200-11**  
**36" DEBARKER (ELECTRIC)**

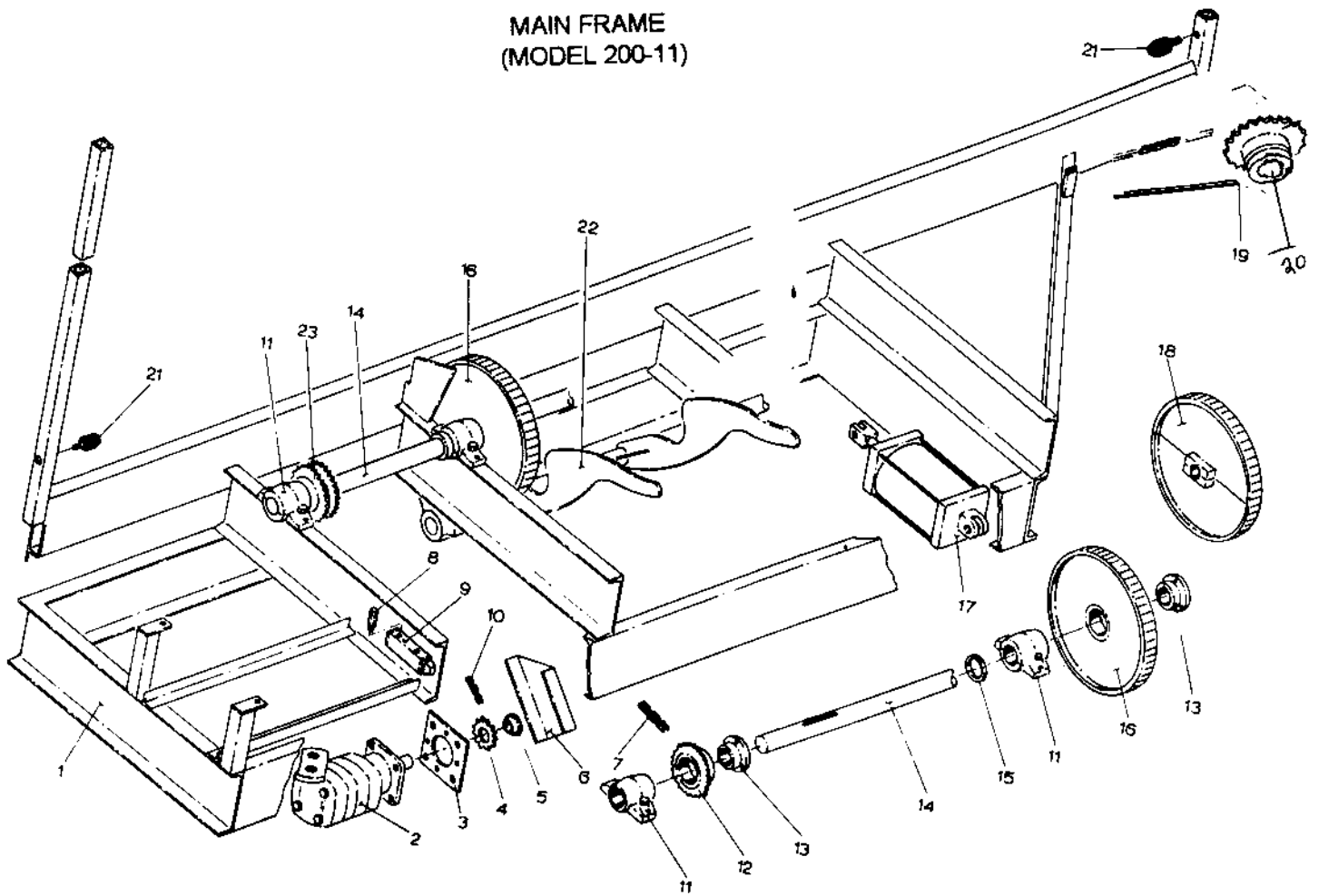
**PARTS LIST**

SERIAL NO. \_\_\_\_\_

**MELLOTT MFG. CO., INC.**  
**13156 LONG LANE**  
**MERCERSBURG, PA 17236**

**TEL 717-369-3125**  
**FAX 717-369-2800**

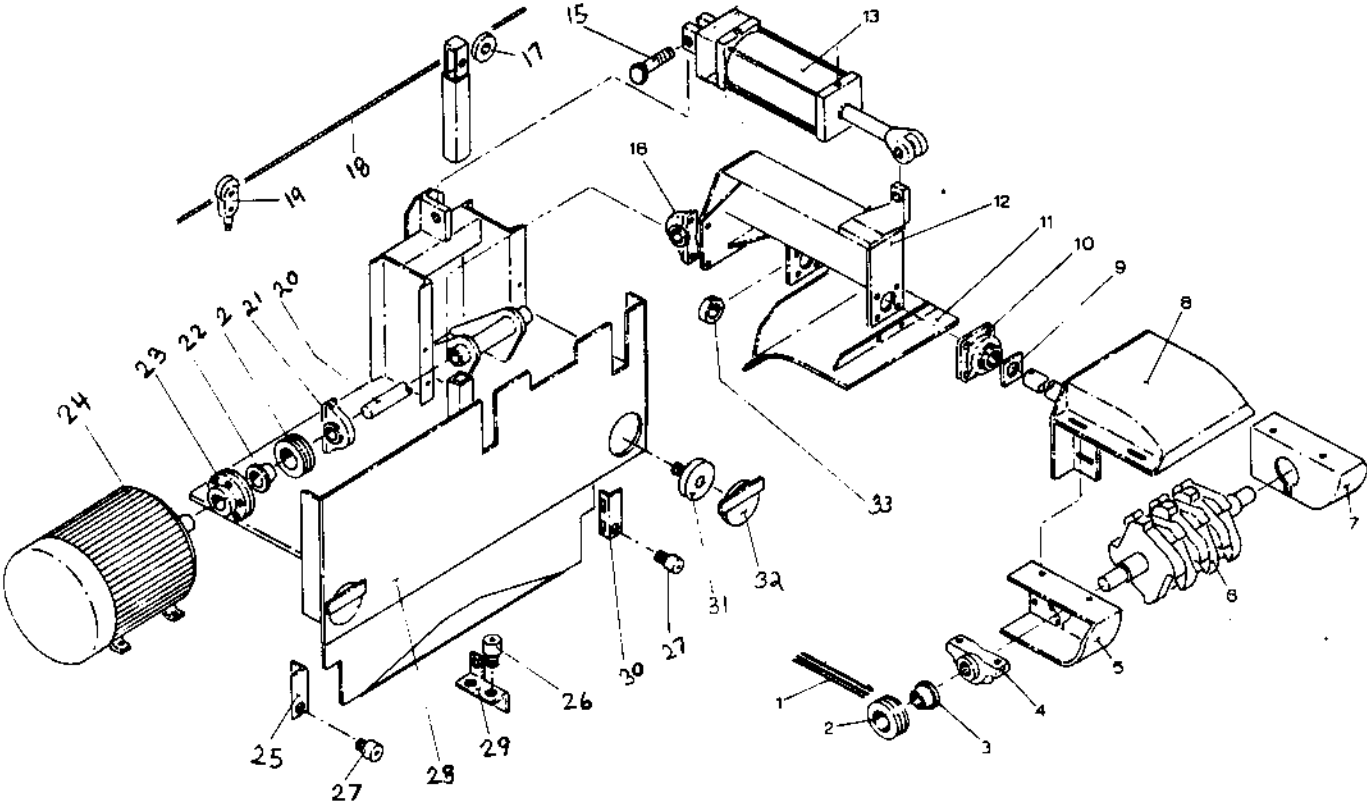
MAIN FRAME  
(MODEL 200-11)



**PARTS LIST**

REF. NO.	PART NO.	DESCRIPTION	QUANTITY
1	10-20030	MAIN FRAME	1
2	DT6606255D	HYDRAULIC MOTOR	1
3	10-20028	PLATE, HYD. MOTOR	1
4	H100Q12	SPROCKET	1
5	QI 2-1/4"	BUSHING	1
6	10-20029	SHIELD	1
7	04-20001	ROLLER CHAIN RC100 68 PITCHES	1
8	MFC-4	EXHAUST RESTRICTOR, 1/2"	2
9	GS30061-2440	VALVE, SOLENOID AIR 3/4"	1
10	04-20003	ROLLER CHAIN RC100 73 PITCHES	1
11	2-1247 2-15/16"	BABBITED PILLOW BLOCK BEARING	17
12	18-10024-6	SPROCKET	1
13	S1 2-15/16"	BUSHING	14
14	16-20080	SHAFT	2
15	10-20002	SET COLLAR	6
16	10-20001	BULLWHEEL	12
17	5000	8" BORE X 12" STROKE AIR CYLINDER	1
18	10-20031	SPLIT BULLWHEEL	1
19	16-20004	70 FT. RC80 CHAIN W/ ROD ATTACHMENTS	1
20	80C26	SPROCKET INCLUDES: MR24RSS BEARING MI20 RACE	1
21	540	1-1/4-7 X 5 BOLT (1-3/4" UNTAPPED SHANK)	1
22	10-20004	SIDE PLATES ARE WELDED ON DEBARKER KICKOFF WELDMENT	1

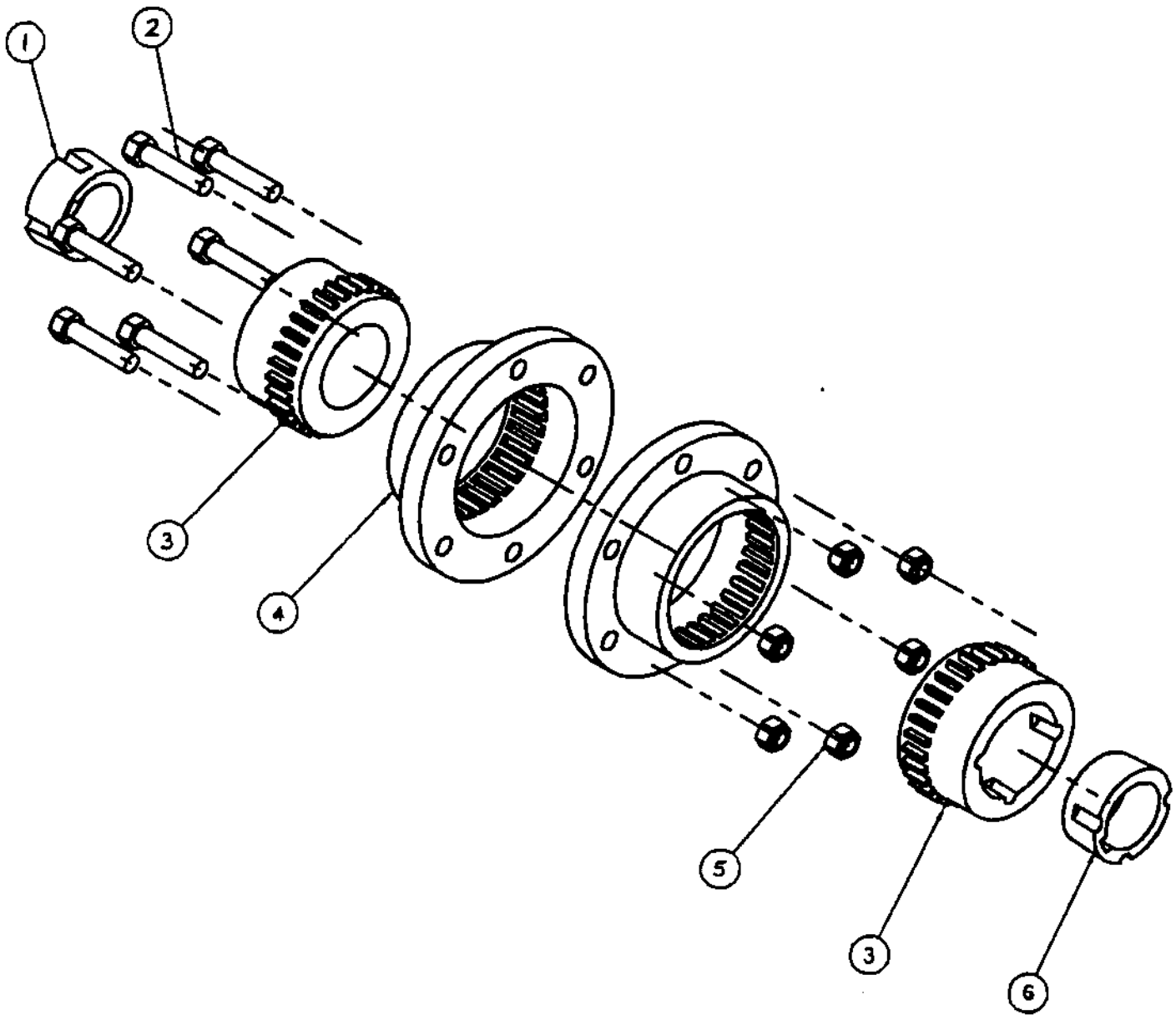
CARRIAGE  
(MODEL 200-11)



**CARRIAGE  
(MODEL 200-11)**

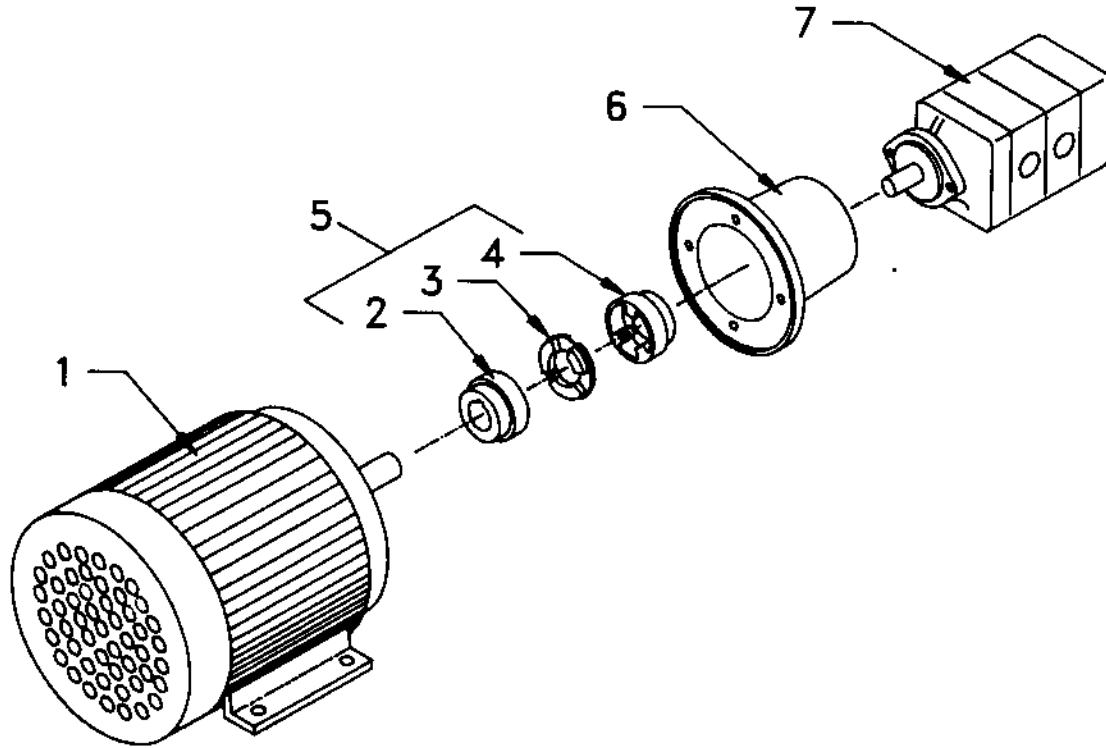
<b>REF. NO.</b>	<b>PART NO.</b>	<b>DESCRIPTION</b>	<b>QUANTITY</b>
1	C99	V-BELTS	6
2	3C X 6.0	SHEAVE	4
3	SF 2-3/16"	BUSHING	2
4	RPB 203-2 2-3/16"	PILLOW BLOCK BEARING	2
5	10-20043	SHIELD, HOUSING LH	1
6	10-20064	CUTTER HEAD	1
7	10-20044	SHIELD, HOUSING RH	1
8	10-20065	HEAD HOUSING	1
9	10-20051	WASHER, PLASTIC	1
10	SC 2-7/16"	4-BOLT FLANGE BEARING	2
11	10-20055	SHIELD (7)	1
12	10-20062	FRAME, HEAD HOUSING SUPPORT	1
13	P186062-00000	6 X 14 REXROTH W/PROXIMITY SWITCH	1
13A	7413221-F1	PROXIMITY SWITCH	1
13B	1000000346	ROD CLEVIS, 1-1/4" (6 x 14)	1
14	NONE		
15	1" X 3"	CAP SCREW	1
16	PB250 2-15/16"	PILLOW BLOCK BEARING	2
17	3-1	SHEAVE 3" OD	1
17A	1-3/4" X 5-1/2" BOLT	W/ GREASE FITTING, LW & NUT (FOR 3-1)	1
18	3/8"	CABLE 3/8" X 35 FT.	1
19	T-2D	DELTRIN CARRIER TROLLEY	8
20	16-20049	SHAFT, 1-15/16"	1
21	KC-45 1-15/16"	SQUEEZE LOCK BEARING	2
22	SF 1-15/16"	BUSHING	2
23	2W	COUPLING	1
24	30 HP/1800 RPM	ELECTRIC MOTOR, 286T, F2 MOUNT	1
25	10-20010	BRACKET, MOUNTING L/H	1
26	CF-3-SB	CAM FOLLOWER	2
27	CF-2-1/2-S	CAM FOLLOWER	2
28	10-20063	CARRIAGE	1
29	10-20012	BRACKET, MOUNTING	1
30	10-20013	BRACKET, MOUNTING R/H	1
31	VLR 5-1/2-8	LOAD RUNNER, V GROOVE	2
32	10-20014	COVER PLATE	2
33	10-20059	SET COLLAR	1
		<b>CARRIAGE DRIVE</b>	
NS	80SF26	SPROCKET	1
NS	SF 14T 12/24 SPLINE	BUSHING	1
NS	RE24070500	HYDRAULIC MOTOR	1

**GEAR COUPLING  
(MODEL 200-11)**



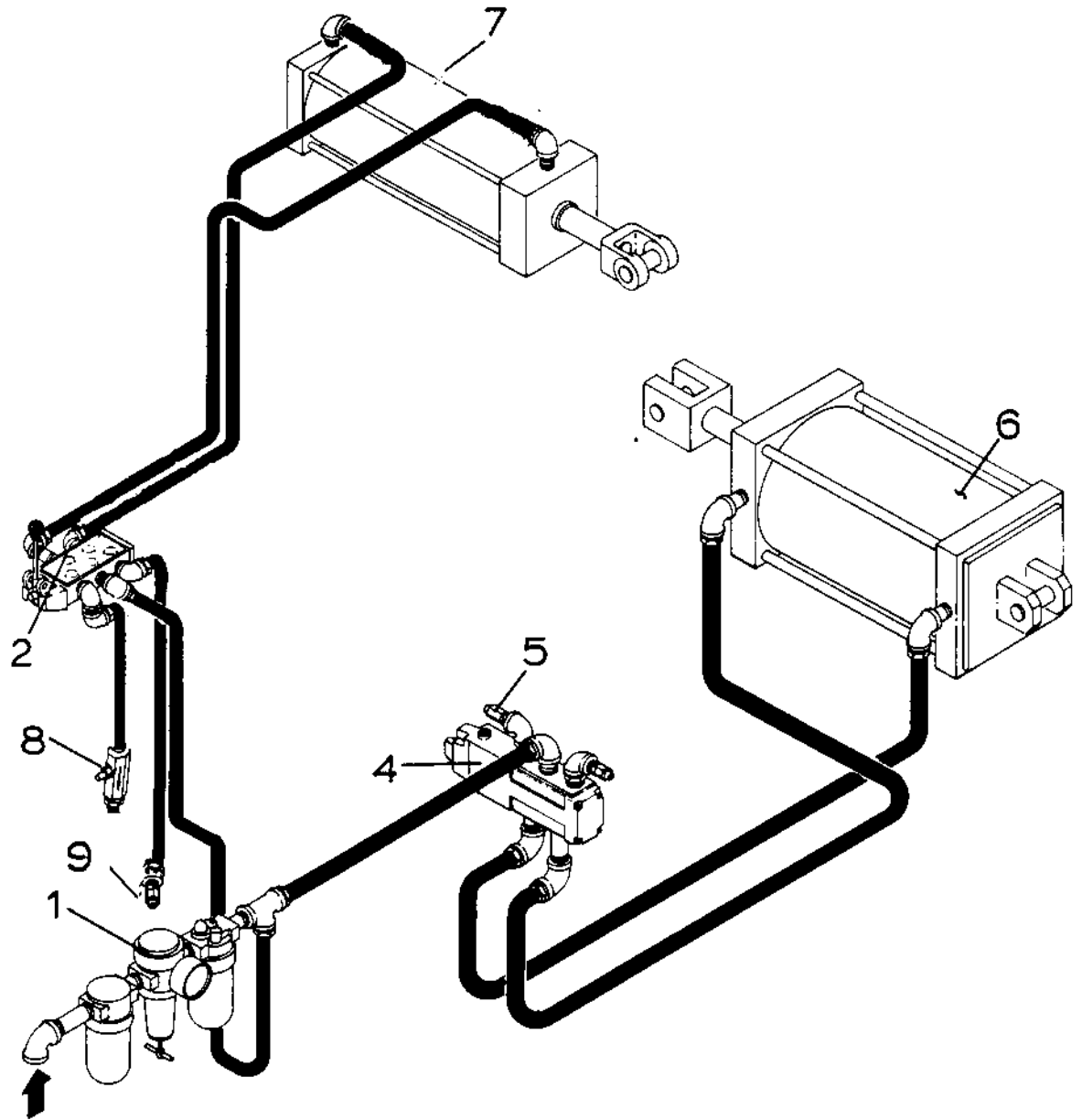
<b>PARTS LIST</b>			
<b>REF. NO.</b>	<b>PART NO.</b>	<b>DESCRIPTION</b>	<b>QTY.</b>
1	2012	BUSHING 1-7/8"	1
2	1/2"-13 X 2-1/4"	HEX HEAD CAP SCREW (662384821314/2W)	6
3	1965995 / 2W (085020)	TAPER LOCK HUB	2
4	1966902 / 2W (498127)	SLEEVE ASSEMBLY	2
5	1/2"-13	NYLON LOCK NUT (662384821314/2W KIT)	6
6	2012	BUSHING 1-15/16"	1

HYDRAULIC POWER SOURCE  
(MODEL 200-11)

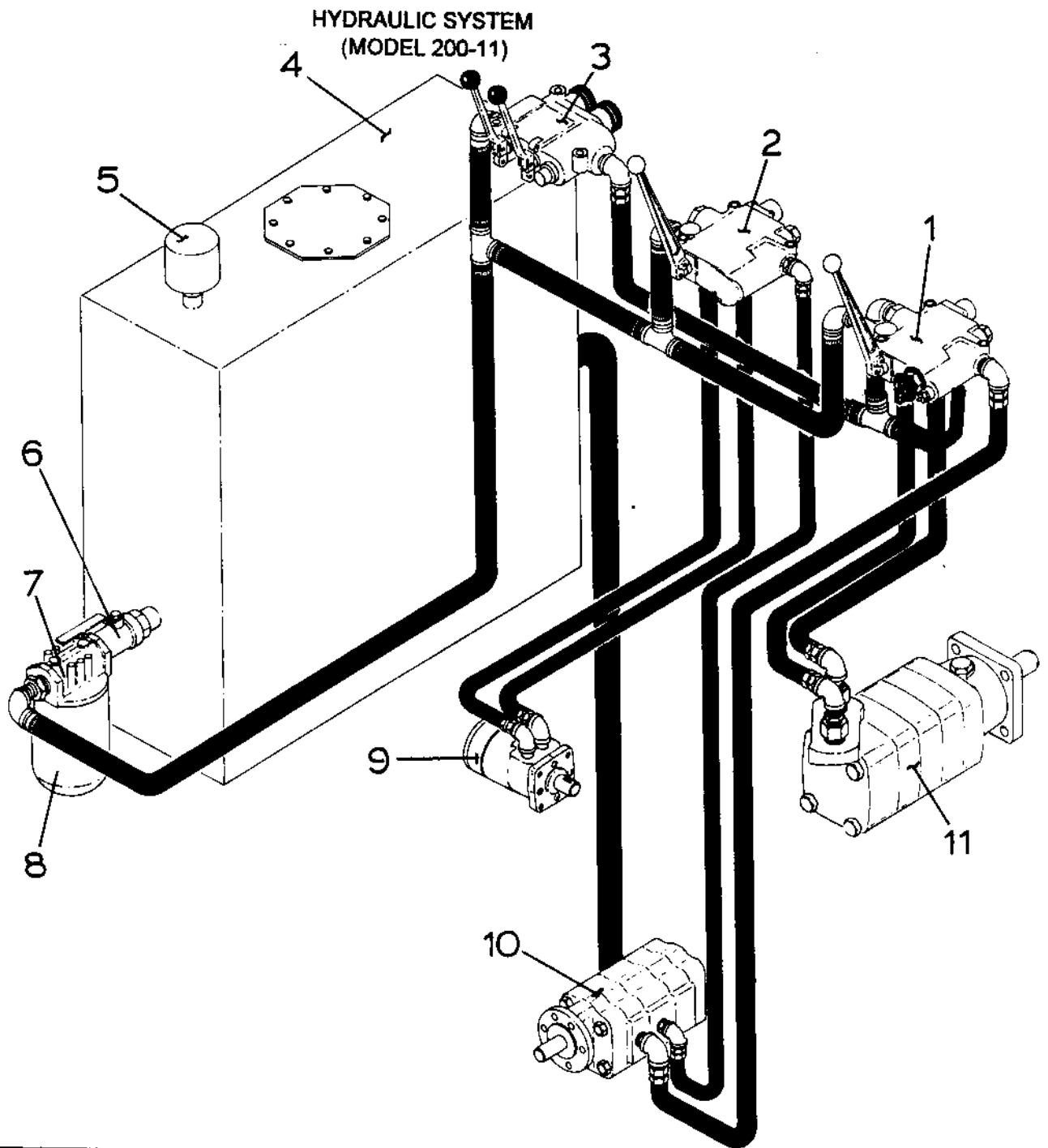


<u>PARTS LIST</u>			
<u>REF. NO.</u>	<u>PART NO.</u>	<u>DESCRIPTION</u>	<u>QTY.</u>
1	15HP/1800 RPM	ELECTRIC MOTOR, 254TC FRAME	1
2	#300 1-5/8"	HUB, COUPLING	1
3	#370 "U" URETHANE	INSERT, COUPLING	1
4	#300 1"	HUB, COUPLING	1
5	MAGNALOY	COUPLING COMPLETE	1
6	M182582AK	ADAPTER KIT	1
7	P30B294BIEC10-43	PUMP	1

AIR SYSTEM  
(MODEL 200-11)



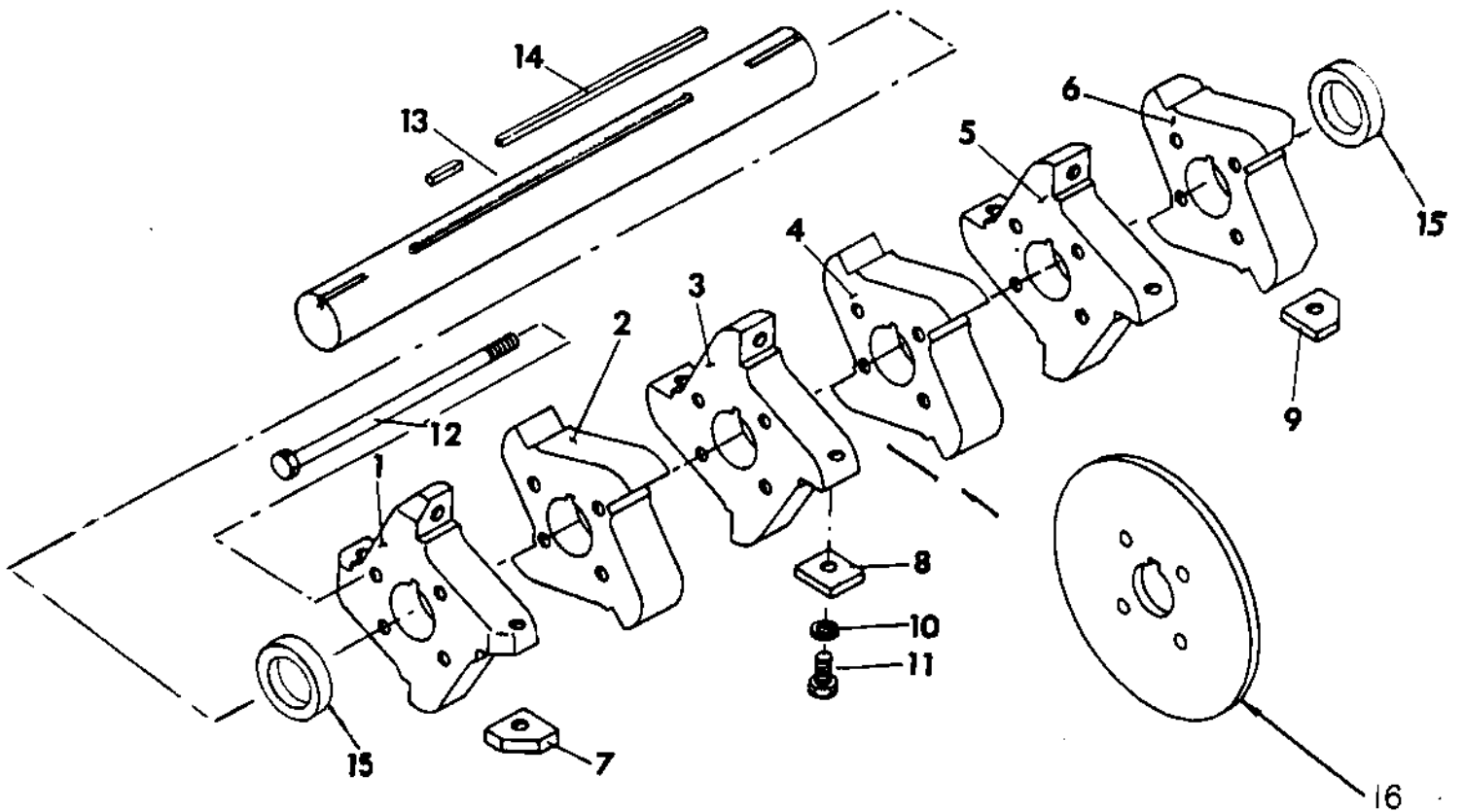
<b>PARTS LIST</b>			
<b>REF. NO.</b>	<b>PART NO.</b>	<b>DESCRIPTION</b>	<b>QTY.</b>
1	07A44A18A1B	3/4" FILTER-REGULATOR-LUBRICATOR	1
2	P-028120-0000	VALVE, AIR	1
3	NONE		
4	GS30061-2440	VALVE, SOLENOID AIR 3/4"	1
5	MFC-4	EXHAUST RESTRICTOR 1/2"	2
6	5000	AIR CYLINDER 8" BORE 12" STROKE	1
7	P186062-00000	6 X 14 REXROTH W/ PROXIMITY SWITCH	1
8	QCVU-12FN-12FN U8E	1/2" CHECK VALVE, 116 PSI	1
9	MFC-4	EXHAUST RESTRICTOR 1/2"	1



<b>PARTS LIST</b>			
<b>REF. NO.</b>	<b>PART NO.</b>	<b>DESCRIPTION</b>	<b>QTY.</b>
1	BC5BGIE2A0	VALVE, HYDRAULIC, BULLWHEEL	1
2	SDC-755-M(12)-4-LS-J	VALVE, HYDRAULIC, CARRIAGE	1
3	20-SPXE 4-4	VALVE, HYDRAULIC, DECK	1
4	10-20009	HYDRAULIC TANK (INCLUDES #5)	1
5	TB-764	BREATHER	1
6	B6000 1-1/4"	BALL VALVE	1
7	FSP212-IEDNN	EXTERNAL FILTER W/ CARTRIDGE	1
8	K23018	FILTER CARTRIDGE	1
9	RE24070500	HYDRAULIC MOTOR, CARRIAGE	1
10	312-9122-664	P30B294BIEC 10-43 PUMP	1
11	DT6606255D	HYDRAULIC MOTOR, BULLWHEEL	1
NS	M340	INTERNAL OIL FILTER	

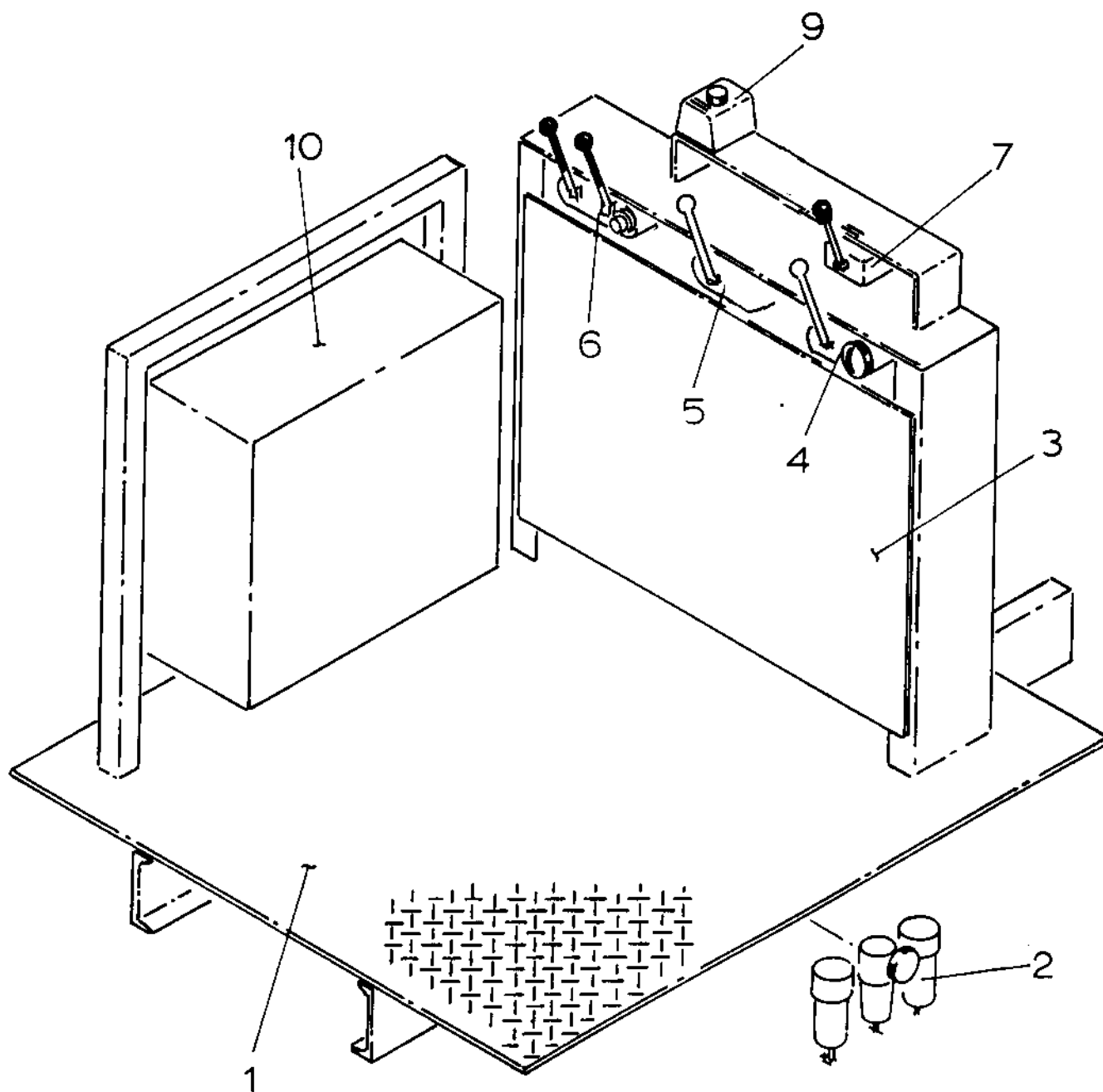


CUTTERHEAD (#10-20064)  
CARRIAGE  
(MODEL 200-11)



REF. NO.	PART NO.	DESCRIPTION	QTY.
1	10-20022-1	SEGMENT, CUTTER #1	1
2	10-20022-2	SEGMENT, CUTTER #2	1
3	10-20022-3	SEGMENT, CUTTER #3	1
4	10-20022-4	SEGMENT, CUTTER #4	1
5	10-20022-5	SEGMENT, CUTTER #5	1
6	10-20022-6	SEGMENT, CUTTER #6	1
7	10-20022-7	SUMMER CARBIDE BIT, LEFT HAND	4
8	10-20022-8	SUMMER CARBIDE BIT, STRAIGHT	16
9	10-20022-9	SUMMER CARBIDE BIT, RIGHT HAND	4
10	10-20022-10	5/8" HI COLLAR LOCK WASHER	24
11	10-20022-11	5/8" X 1-3/4" BOLT, GRADE 5	24
12	10-20022-12	TIE BOLT, 5/8" X 11-1/2" GRADE 2	4
NS		5/8" FLAT WASHERS	8
NS		5/8" NUT	4
13	16-20022-16	SHAFT, CUTTERHEAD 2-3/16" X 27" LONG	1
14	10-20022-16	KEY, 1/2" SQ. X 14-1/2" LONG	1
15	10-20022-15	2-3/16" SET COLLAR	2
16	10-20065	DEPTH RING, 1/2" AR PLATE	1

OPERATOR'S PLATFORM  
(MODEL 200-11)



<b>PARTS LIST</b>			
<b>REF. NO.</b>	<b>PART NO.</b>	<b>DESCRIPTION</b>	<b>QTY.</b>
1	10-20026	PLATFORM, OPERATOR	1
2	07A44A18A1B	FILTER-REGULATOR-LUBRICATOR	1
3	10-20025	COVER, CONTROL STAND	1
4	BC5BGIE2A0	VALVE, HYDRAULIC	1
5	SDCF-755-M(12)-4-LS-J	VALVE, HYDRAULIC	1
6	20-SPXE 4-4	VALVE, HYDRAULIC	1
7	P-028120-0000	VALVE, AIR	1
8	NONE		
9	800T-B2A	PUSH-BUTTON SWITCH	1
10		STARTER PANEL	1