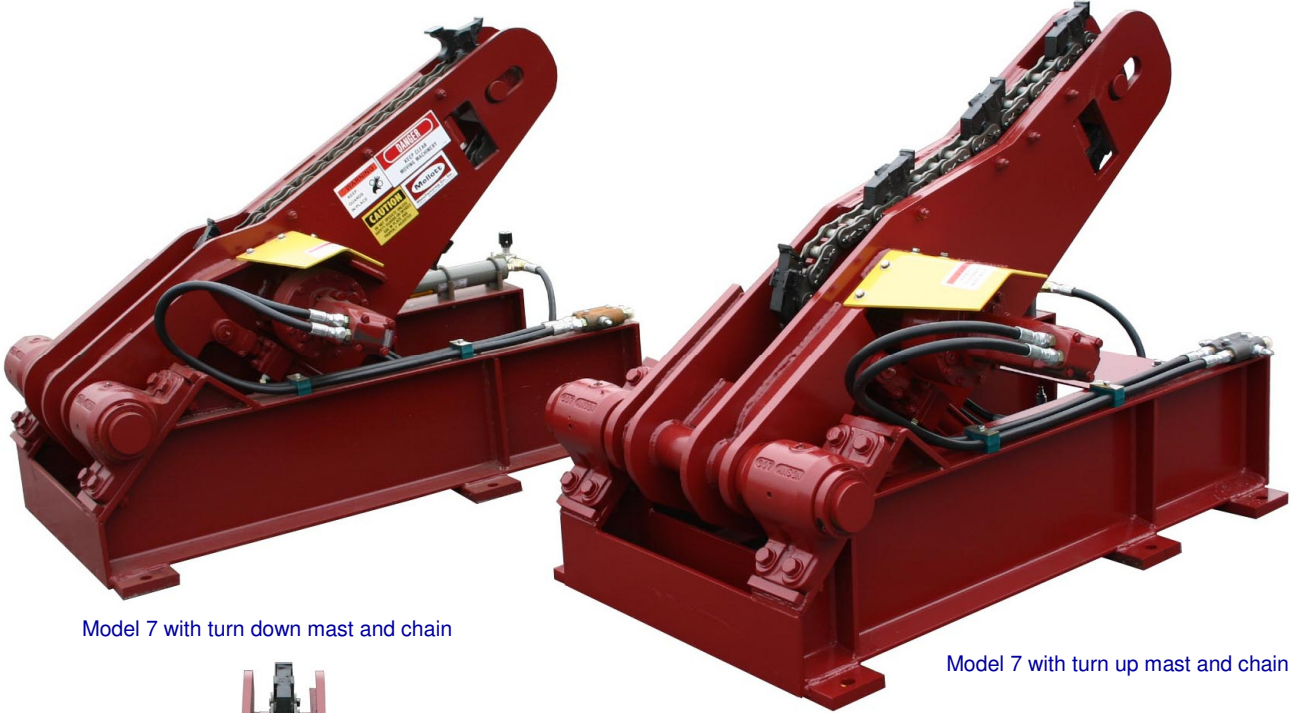




# LOG AND LUMBER HANDLING SYSTEMS

## MODEL 7 LOG TURNER

TURN UP AND TURN DOWN VERSION



Model 7 with turn down mast and chain

Model 7 with turn up mast and chain



## FEATURES

The Model 7 log turner is available in both a turn up and a turn down version.

The mast of the turn up version is angled away from the carriage so that the turner will pull out on the bottom of a log or cant. This makes turning a log easier and allows the corner of a cant to swing out while turning, requiring less mast movement and less operator input.

Extra heavy construction and a simple design are used throughout the Model 7 in order to keep maintenance and down time to a minimum.

- Frame constructed of S12 x 31.8 Lb. beam
- Pivot shaft is 3 7/16" diameter
- Pivot bearings are one piece urethane sleeve bearings
- Log turning chain is an extra heavy version of Rc160
- Log turning chain is direct driven by a planetary gearbox with a plug in hydraulic motor
- The chain take-up is enclosed in the turner mast to prevent damage
- The side and bottom chain wear plates are replaceable

The Model 7 is pivoted on a 3 7/16" diameter shaft with urethane sleeve bearings.

The log turning chain is direct driven by a planetary gearbox with plug in hydraulic motor

### MELLOTT MFG. CO., INC.

13156 Long Lane  
Mercersburg, PA 17236

Phone: (717) 369-3125 Fax: (717) 369-2800  
sales@mellottmfg.com

[www.mellottmfg.com](http://www.mellottmfg.com)

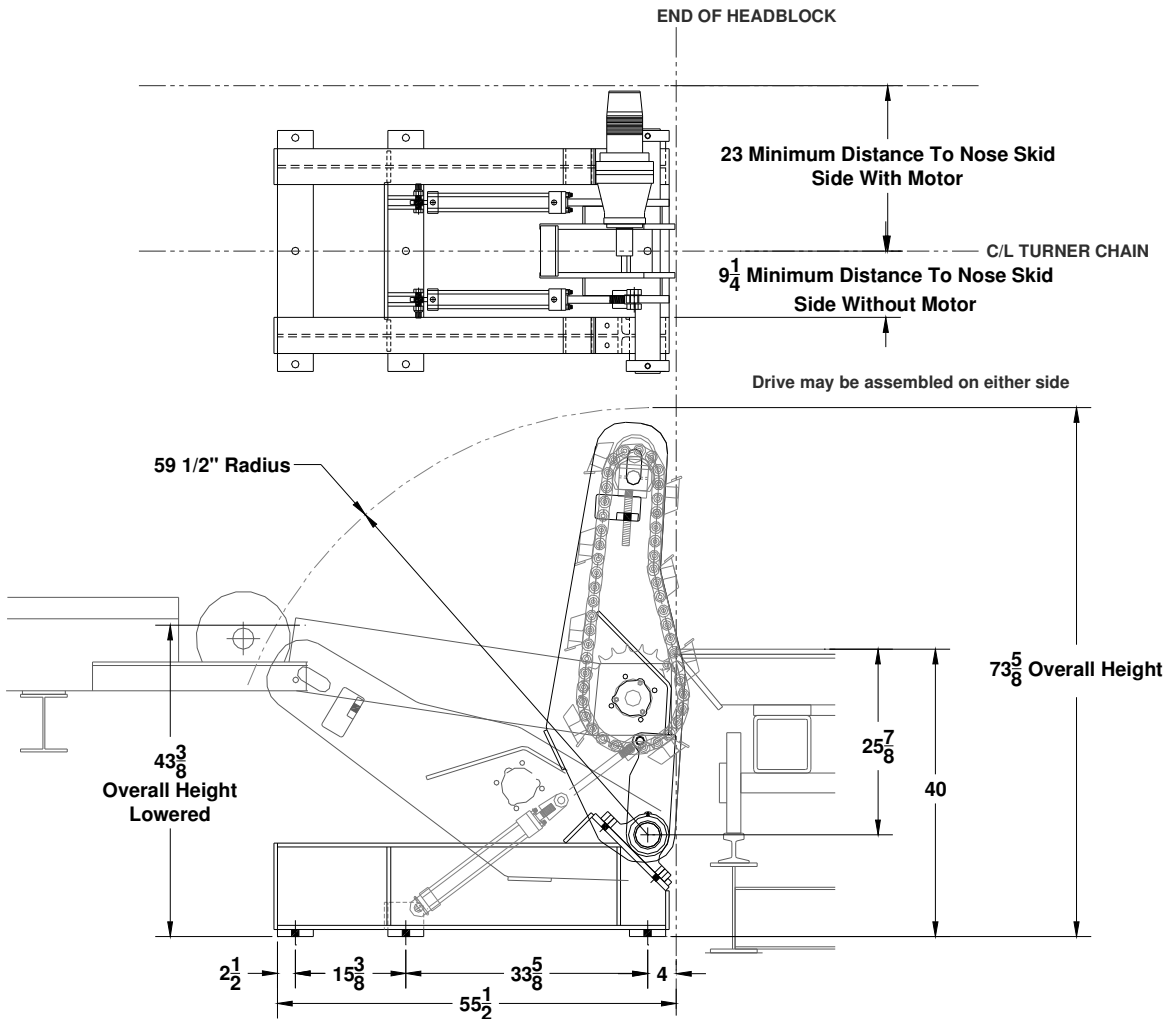


# LOG AND LUMBER HANDLING SYSTEMS

## MODEL 7 LOG TURNER

### SPECIFICATIONS

|                             |  |
|-----------------------------|--|
| Frame .....                 | S12 X 31.8 beam  |
| Mast.....                   | (2) 3/4" flame cut plates  |
| Pivot shaft.....            | 3 7/16" diameter   |
| Pivot bearings.....         | (2) urethane sleeve bearings   |
| Cylinders.....              | (2) 2" bore X 14" stroke, 3000 psi rated hydraulic cylinders   |
| Turning chain.....          | RC 160 SU "super ultimate" roller chain  |
| Drive.....                  | Planetary gearbox, 2 1/4" output shaft, direct coupled to hydraulic motor  |
| Drive sprocket.....         | H160R22 with R2 - 2 1/4" bushing   |
| Turning lugs.....           | 1 1/4" x 1 1/2" cold finish bar with A.R. 235 wear surface   |
| Turn up chain .....         | (8) turn up lugs   |
| Turn down chain.....        | (1) turn down lug and (5) turn up lugs   |
| Hydraulic requirements..... | 18 gpm @ 1250 psi minimum, 25 gpm @ 1500 psi recommended   |
| Control options.....        | Manually operated control stick<br>..... Electric joystick controller<br>..... Hydraulic pilot joystick controller |
| Weight .....                | 1900 Lbs.  |



**MELLOTT MFG. CO., INC.**

13156 Long Lane  
 Mercersburg, PA 17236

Phone: (717) 369-3125 Fax: (717) 369-2800  
 sales@mellottmfg.com

[www.mellottmfg.com](http://www.mellottmfg.com)