



LOG AND LUMBER HANDLING SYSTEMS

VIBRATING CONVEYOR

STANDARD DUTY DUTY



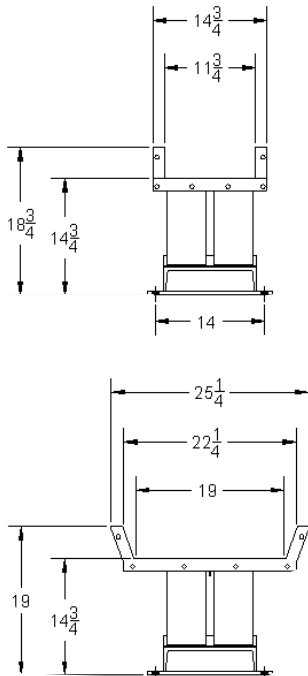
SPECIFICATIONS

Steel trough.....1/4" formed steel

Base Weldments.....12" Channels

Conveying Speed.....40 to 45 FPM

Horsepower Requirements.....1.3 HP per 10' of length



These sizes are now available as standard conveyors.
Specify 19" or 12" wide when ordering
Different size pans are available as special orders

| ITEM | DESCRIPTION |
|--------|---|
| 150-3 | 10' Section with Eccentric |
| 150-3a | 75" Section with Eccentric |
| 151-3 | 10' Section Intermediate |
| 152-3 | 75" Section Intermediate |
| 153-3 | 45" Section Intermediate |
| 154-3 | 60" Fiberglass Section |
| 155-3 | Transition spout (horizontal hog or chipper)* |
| 156-3 | 5 HP Electric Drive** |
| 157-3 | 7.5 HP Electric drive** |
| 158-3 | 10 HP Electric Drive** |
| | 15 HP Electric Drive** |
| 159-3 | 10' Section Intermediate with Sawdust Screen*** |

*Specify hog or chipper brand and size

**Includes motor, motor base, sheaves, belts and shield

Specify right or left hand drive

70' Maximum length with one drive

***Specify right or left hand discharge

MELLOTT MFG. CO., INC.

13156 Long Lane
Mercersburg, PA 17236
Phone: (717) 369-3125 Fax: (717) 369-2800
sales@mellottmfg.com

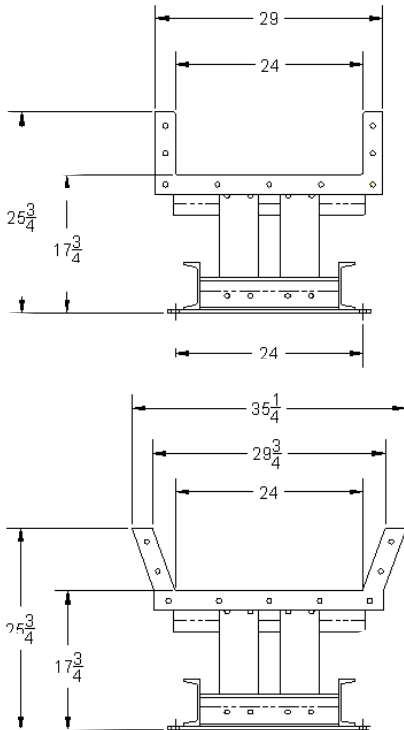
www.mellottmfg.com



LOG AND LUMBER HANDLING SYSTEMS

VIBRATING CONVEYOR

HEAVY DUTY



Straight and flared sides are now available as standard conveyors.

Specify straight or flared sides when ordering

Different size pans are available as special orders

SPECIFICATIONS

Steel trough.....1/4" formed steel

Base Weldments.....6" Channels

Conveying Speed.....40 to 45 FPM

Horsepower Requirements.....2 HP per 10' of length

| ITEM | DESCRIPTION |
|--------|---|
| 150-4 | 10' Section with Eccentric |
| 150-4a | 75" Section with Eccentric |
| 151-4 | 10' Section Intermediate |
| 152-4 | 75" Section Intermediate |
| 153-4 | 45" Section Intermediate |
| 154-4 | 60" Fiberglass Section |
| 155-4 | Transition spout (horizontal hog or chipper)* |
| 156-4 | 5 HP Electric Drive** |
| 157-4 | 7.5 HP Electric drive** |
| 158-4 | 10 HP Electric Drive** |
| | 15 HP Electric Drive** |
| 159-4 | 10' Section Intermediate with Sawdust Screen*** |
| 159-4a | 18' Section Intermediate with Sawdust Screen*** |

*Specify hog or chipper brand and size

**Includes motor, motor base, sheaves, belts and shield

Specify right or left hand drive

70' Maximum length per drive

***Specify right or left hand discharge

MELLOTT MFG. CO., INC.

13156 Long Lane

Mercersburg, PA 17236

Phone: (717) 369-3125 Fax: (717) 369-2800

sales@mellottmfg.com

www.mellottmfg.com