

Fig. 1

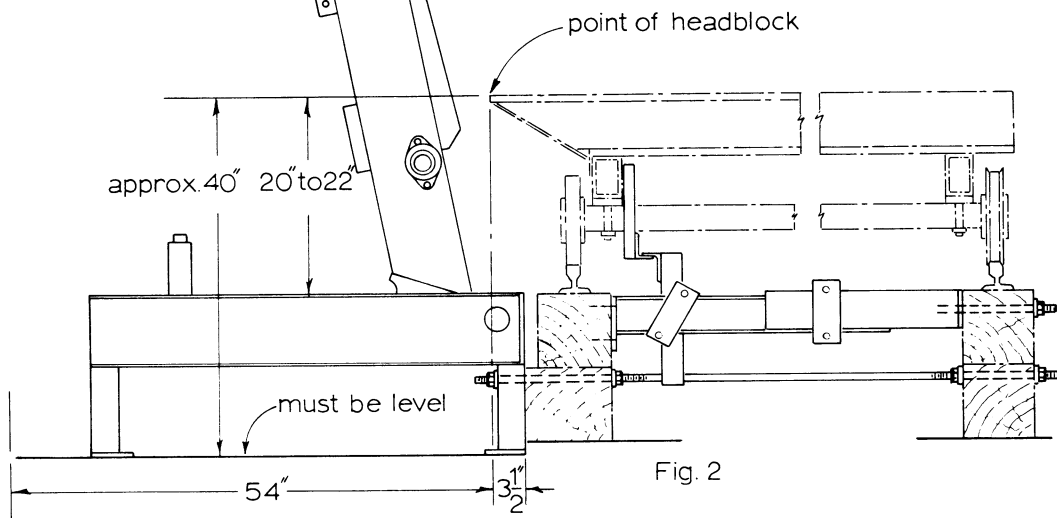


Fig. 2

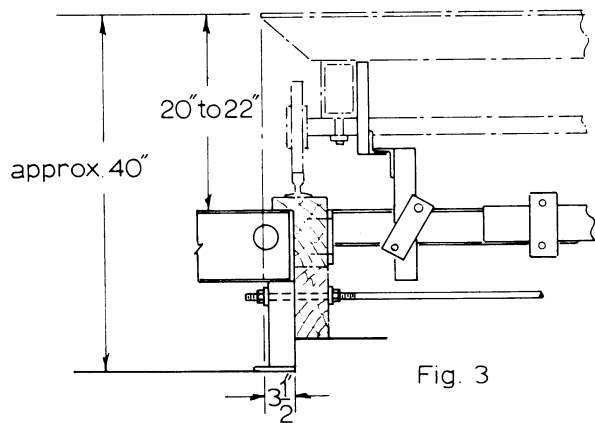
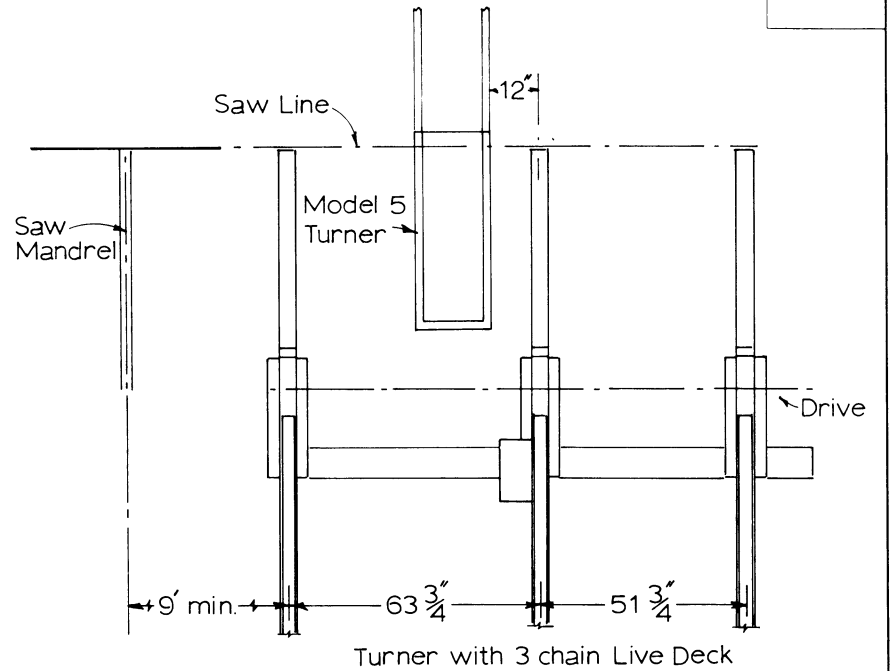
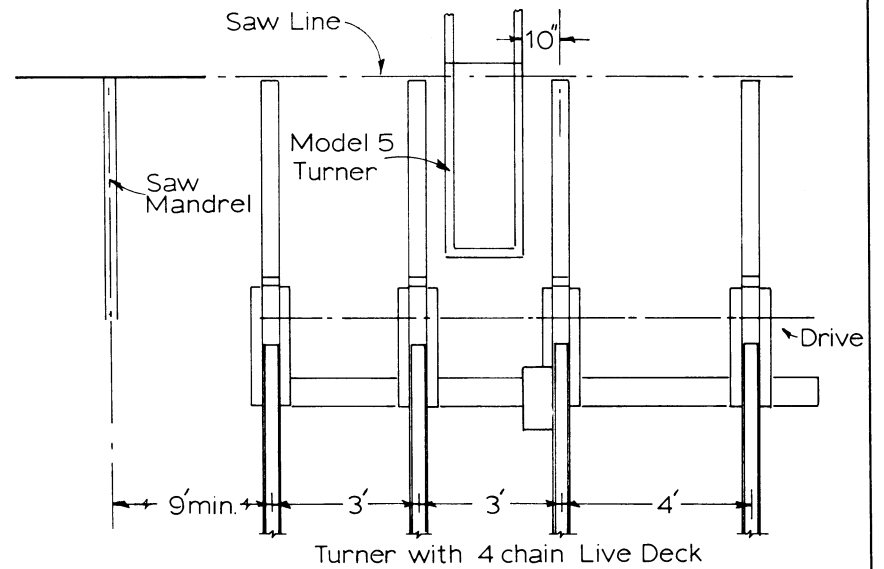


Fig. 3



Turner with 3 chain Live Deck



Turner with 4 chain Live Deck

Note: pit for Turner to be 24" wide.

MELLOTT MFG. CO. INC.		
SCALE: <i>NTS</i>	APPROVED BY:	DRAWN BY: <i>JLP</i>
DATE: <i>5/20/81</i>		
Model 5 Log Turner		
Installation		DRAWING NUMBER

LOG TURNER (MODEL 5) INSTALLATION INSTRUCTIONS

INSTALLATION

Make pit for turner per dimensions shown on drawings. Base of pit must be level and may be constructed of concrete. Turner base should rest either on concrete or timbers.

Use dimensions shown on Figure 1, 2, and 3 to position the log turner correctly in relation to the head blocks. The turner base may be lagged to the pit floor or may be secured to the timbers supporting the carriage track with 2 lengths of 3/4" all thread rod as shown in Figure 2 and Figure 3.

Depending on the type of carriage and supports for the track, the installation of the turner frame extensions and anti-derail attachments should be completed following Figure 1, 2, or 3.

Anti-derail attachments may not be necessary if the carriage is equipped with its own anti-derail.

HYDRAULIC CONNECTIONS

Mount control valve and stand on sawyers platform. Follow hydraulic circuit diagram when making hydraulic connections.

CAUTION: KEEP ALL HOSE AND VALVE OPENINGS COVERED UNTIL CONNECTIONS ARE MADE. ALLOW NO DIRT NOR FOREIGN MATERIAL TO ENTER VALVE OR HOSES.

Route hoses under platform so that they will not become damaged during operation. Connect cylinder to link at base of mast.

OPERATION

CAUTION: NEVER PERMIT PERSONNEL TO STAND NEXT TO TURNER WHEN IN OPERATION. POWER TO TURNER AND DECK MUST BE LOCKED OUT BEFORE ANY MAINTENANCE IS PERFORMED.

The Model 5 turner is controlled by a 2 spool valve mounted on a stand with a single lever controlling all functions. Shifting one spool will raise or lower the mast. The other spool controls the chain rotation.

Begin operation with turner mast in lowered position. Operate stop and loader of live deck to load one log on to the nose skids of live deck. As log passes over turner, operate turner valve to raise mast of turner. Follow log with turner mast and by pushing on log with mast, load log on to the head blocks. With mast holding the log on the carriage, operate the valve so that the turner chain will rotate and will turn the log. (The accumulator will cause the mast to follow the contour of the log without the operator shifting the valve spool to the cylinder when in the turning position).

Stop turner chain when log is in desired position. Keep turner mast against log so that log is against the knees. Dog the log and lower turner mast. After saw cut is made on the log, return carriage to position for log turning and stop carriage. Raise turner mast to turning position, un-dog and operate turner chain.

CAUTION: DO NOT USE TURNER TO "CATCH THE LOG ON THE FLY" OR MOVE CARRIAGE WHILE TURNING. THIS PLACES A SIDE LOAD ON TURNER AND CHAIN CAUSING CHAIN FAILURE.

MAINTENANCE

Keep all debris cleaned out from under turner at the end of each shift.

Grease pivot points #502 and pins #522 and #552 daily.

Maintain chain tension by adjusting bearings and idler sprocket with #538 adjusting bolts. Should chain become stretched so that all adjustment is used, order and install offset link #506E.

Grease bearings #SF 1-15/16" (Top drive sprocket) and #SFT 1-1/4" (Lower drive sprocket) twice yearly.

To reassemble components under cover #508 follow this procedure.

Attach #512 sprocket to plate with bolt and adjust top chain by moving plate #539 in slotted holes. Adjust lower chain by moving motor support plate #519 in slotted holes. The bolt holding #512 sprocket is now removed. Replace cover #508 and install bolt thru cover and #512 sprocket. Install other bolts as necessary.

Replacement of worn parts will insure longer life and optimum operation.

Refer to Hydraulic Trouble Shooting chart for hydraulic problems.